

GREEN GLUE Installation Guide

Green Glue can be used to soundproof walls, floors and ceilings. Green Glue is used in both new construction, building upgrades and renovations.

Case Coverage (12 tubes per case)

- 1 Case of Green Glue with 2 tubes applied to 4'x8' sheet will cover 192 square feet
- 1 Case of Green Glue with 1 tube applied to 4'x8' sheet will cover 384 square feet



Allow Green Glue 30 days of drying time for optimal sound isolation performance.

Quick 1, 2, 3 Installation



- 1** Apply 1-2 tubes of Green Glue in a random pattern to the backside of the second layer of drywall.



- 2** Lift and firmly press second layer of drywall into place.



- 3** Fasten drywall to framing following local building codes.



Coverage

The ideal coverage should be uniform throughout the sheet using 1 - 2 tubes. Do not use more than 3 tubes per sheet since too thick a layer will cause performance to drop.

Green Glue will compress to thin film. This film will not be continuous, and there will be desirable gaps and pockets in the coverage.



Green Glue is Sticky

There is nothing harmful about Green Glue, but warn your installers that it can be tough to clean up after it has dried. Take precautions such as drop cloths and latex gloves when using Green Glue. Take care to remove the Green Glue from unwanted surfaces before it dries. Use 70% Isopropyl Alcohol to clean up Green Glue.



Drying Time

Assemble the Green Glue panels within 15 minutes after Green Glue applied. Sheets must be screwed together while the Green Glue is still wet.

Allow Green Glue 30 days of drying time for optimal sound isolation performance. Keeping the room warm and air dry will speed drying.

Hanging the First Layer



1 We recommend using fiberglass insulation in your walls and ceilings for best performance.



2 If you decide to leave a gap, place 1/4" shims on the floor. Later you will fill in with flexible caulk. Alternately, you can install the drywall directly on the floor.



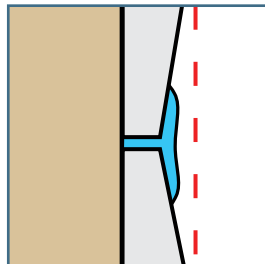
3 Hang the first layer of drywall horizontally.



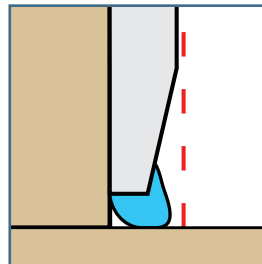
4 Screw drywall into place following local building codes.



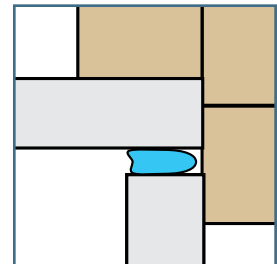
5 For best performance use SilenSeal Acoustical Sealant to seal any gap. *You do not have to mud and tape the first layer of drywall.*



Use SilenSeal between tapered edges to fill any large gap.



If you decided to leave a gap between the wall and subfloor then fill with SilenSeal.

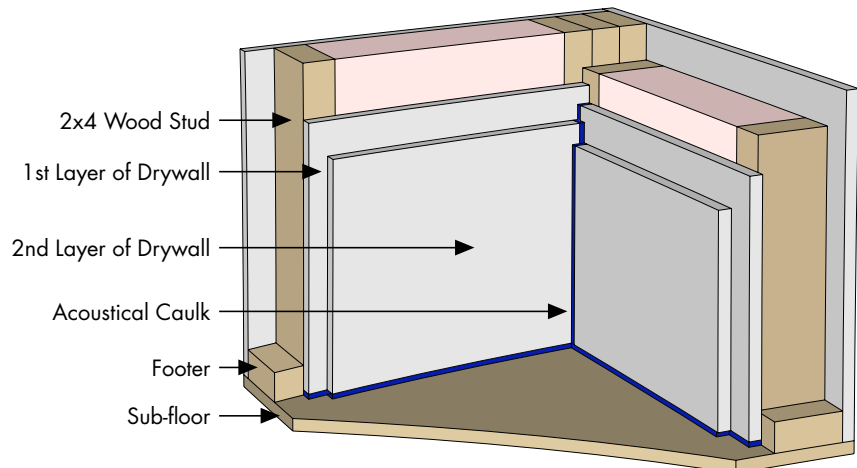
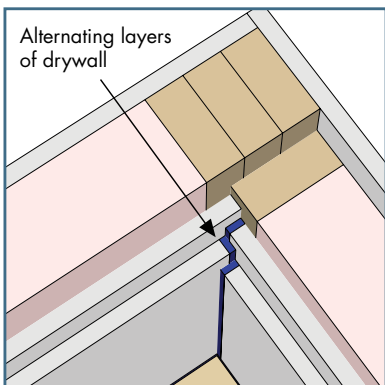


Seal any gap in the rooms corners.



Pro-Tip:

- Don't worry about the application pattern. Green Glue is very effective even if you use a little more or less than planned.
- Don't worry about coating the entire board. You want fat Green Glue beads from the caulk tube, and do not want a smooth troweled or rolled application.
- Don't worry if you don't hear a difference immediately. The water has to leave the Green Glue for it to work. Allow 30 days to dry.
- Don't worry about the paint-like smell. Just exchange the air in the room as if you were painting.



Opening Green Glue



1 Use a utility knife and cut opening in the Green Glue tube. Tighten nozzle to opened Green Glue tube.

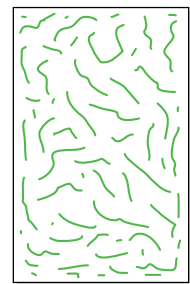
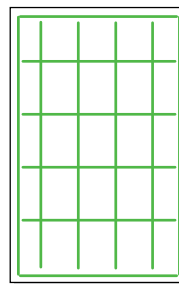
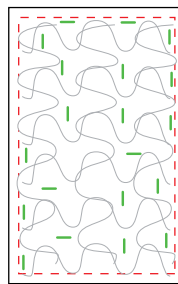
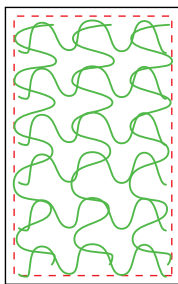
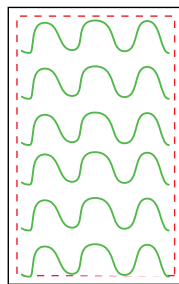
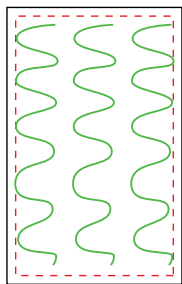


2 Use a utility knife and cut a 3/8" opening in the nozzle. A fat Green Glue bead is preferred.



3 Use a standard caulking Gun to apply Green Glue. **Do not trowel Green Glue onto the drywall.**

Suggested Green Glue Pattern



Apply Green Glue in a random pattern. Try to leave a 3" border around the perimeter. This will allow you to move the board without getting Green Glue on your hands.

If you have a little extra fill empty areas.

Lines, squiggles, plops, etc. The pattern isn't an issue, it's the amount being used. The Green Glue needs to be roughly even across the board.

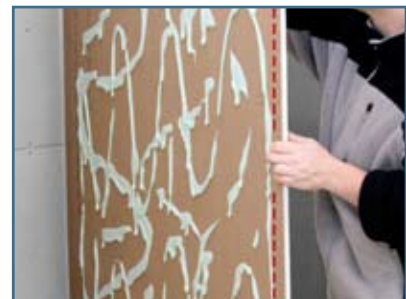
Applying Green Glue



1 Apply the first tube of Green Glue in a random pattern. Make sure the floor is clean so not to damage the face of the drywall. You may also consider using sawhorses and set drywall on.



2 Apply the second tube filling in any large empty areas. The important thing is to apply the Green Glue approximately evenly over the board. There is no optimal pattern.



3 Leave a 2"-3" border around the edge of the drywall. This will allow you to carry the sheet without getting Green Glue on your hands.



4 Press drywall into place. Make sure you stagger the seams of your drywall layers. You do not want your seams from layer 1 to align with the seams of layer 2.



5 Screw the second layer of drywall to framing, following local building codes. (Use screws not nails)



6 Apply SilenSeal Acoustical Caulk to any perimeter gap. Tape and mud as normal to finish the wall.

Staggering Seams



1 Staggering drywall seams between layers is important for best performance. Here we're hanging the first layer of drywall horizontally on the sample model.



2 Screwing the drywall in place, following local building code. Note the optional spacer on the floor. Fill with SilenSeal Acoustical Caulk before applying second layer.



3 Apply Green Glue to back of the second layer of drywall, and hang it vertically. Press firmly to squeeze the Green Glue, then screw into place.



4 The next board will cover the seam of the first layer of drywall. All screws for all layers are installed into the studs or joists following local building code.



5 Seal any gap with SilenSeal Acoustical Caulk.



PRO TIP: Working Quickly

Install Green Glue faster for less with the Speedload Dispenser

It just made good business sense installing Green Glue from a pail. We were able to get a better price per square foot and the gun worked aces for our drywall crew. - T. Sells

